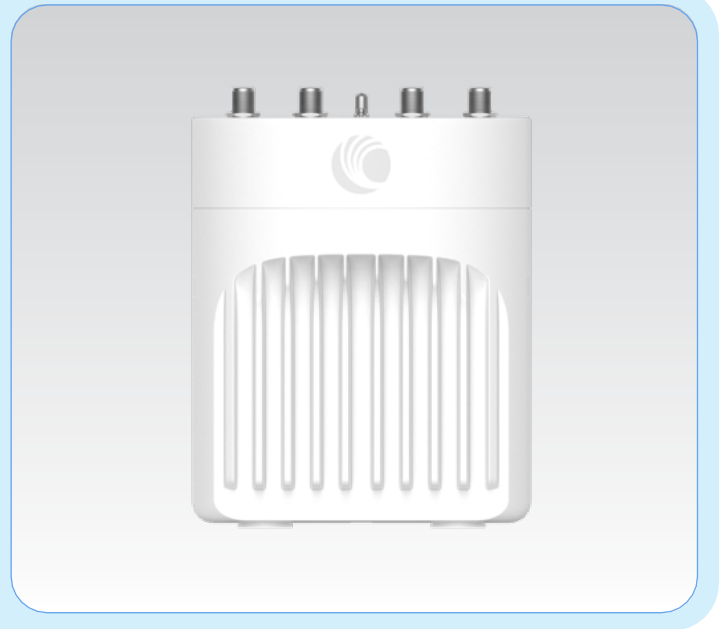


XE3-4TN Wi-Fi 6 Outdoor Access Point

802.11ax Tri-Radio 4x4/2x2 Access Point with N-type antenna connectors

QUICK LOOK :

- Tri-Radio/Tri-Band WiFi 6/6E
- Software-defined 5 GHz/6 GHz radio
- AFC compliant for 6 GHz operation*
- 6.6 Gbps aggregate data rate
- 2.5 GbE and 1 GbE uplink ports
- Managed by cnMaestro, XMS-Cloud, Swift
- Outdoor-rated IP67 enclosure



Outdoor high-density, future-proof Wi-Fi

The XE3-4TN is an outdoor-rated tri-radio Wi-Fi 6/6E 4x4/2x2 access point (AP) designed to deliver future-proof performance and value for building next-generation networks. Wi-Fi 6 delivers faster and more efficient wireless network connections than previous-generation Wi-Fi technologies. Wi-Fi 6E extends the capacity of Wi-Fi into the 6 GHz band, more than tripling the wireless spectrum available.

Software-defined radio provides flexibility

The software-defined radio (SDR) provides flexibility to match the capability of the connected clients and to match the regulatory limits in the 6 GHz band. Where 6 GHz outdoor is not allowed, operate the XE3-4TN in dual 5 GHz mode to expand capacity in the allowed 5 GHz channels. Where 6 GHz outdoor is allowed, and Wi-Fi clients support it, use tri-radio mode to dramatically increase density in a reduced RF interference environment.



XMS-Cloud



cnMaestro™ X

The XE3-4TN comes with an industry-leading three-year hardware warranty, providing return and repair service on the access point and multiple tiers of customer support, from the business day to extended hours and advanced replacement.

**Automatic frequency coordination (AFC) is under development and will be a cloud service that will assign operating channel and power. AFC is required for 6 GHz operation outdoors.*

XE3-4TN Wi-Fi 6 Outdoor Access Point

Access Point Specifications

Note: Some features will be included on subsequent firmware releases.

FCC	Ch 1–11, 36–64, 100–144, 149–165
ISED	Ch 1–11, 36–64, 100–116, 149–165
ETSI	Ch 1–13, 36–64, 100–140
ROW	(Individual country limits may apply) Ch 1–14, 36–64, 100–144, 149–177
6 GHz Channels	
FCC/IC/ROW	Ch 1–233
EU	Ch 1–93
Note: FCC, IC, EU DFS channels not supported in first release	
Radios	5 GHz/6 GHz 802.11a/n/ac/ax, 4x4 SW configurable 5 GHz 802.11 a/n/ac Wave 2/ax, 2x2 2.4 GHz 802.11 b/g/n/ax, 2x2 BLE 4.1, GPS receiver
Wi-Fi	802.11 a/b/g/n/ac Wave 2/ax
SSID Security	WPA3, WPA2 (CCMP, AES, 802.11i), WPA2 Enterprise (802.1x/EAP), WPA PSK (TKIP), WEP, Open
Max PHY Rate	5/6 GHz radio 4,804 Mbps 5 GHz radio 1,201 Mbps 2.4 GHz radio 573.5 Mbps
Ports	1 x IEEE 100/1000/2500 Mbps Ethernet 1 x IEEE 10/100/1000 Mbps Ethernet with PoE out
Max EIRP	Radio 1: 2x2 2.4 GHz = 28dBm Radio 2: 2x2 5 GHz = 28dBm Radio 3: 4x4 5 GHz/6 GHz = 25dBm The cable loss and antenna gain are separate from any radio conducted power specification. Please refer to the Antenna Guide for more details. <i>EIRP may be limited by country regulations.</i>

Power	Typical power 25W (802.3at) Maximum power 62W with PoE out enabled and sourcing 30W Passive PoE Output: 30V or 48V nominal at up to 30 Watts
Dimensions	220mm x 200mm x 86mm (8.66 in x 7.87 in x 3.39 in)
Weight	2,920 g (6.44 lb)
MTBF	498,910 hours @ 25°C 132,618 hours @ 65°C
Mount Options	Pole or wall mount Pole diameter: MIN 30 mm / MAX 75 mm
Security	Kensington lock slot
LEDs	Multi-color status LEDs
Ambient Operation Temperature	-40°C to 65°C (-40°F to 149°F)
Storage Temperature	-40°C to 70°C (-40°F to 158°F)
Humidity	95% RH non-condensing
Certifications (Compliance)	WiFi Alliance 80211a/b/g/n/ac/ax, PP2.0 FCC, ETSI, CE, IC, IEC60950, IEC62368, EN61373, EN50121, EN 303 413 (GPS), IEC 60068-2-5 (solar radiation), IEC 60529 (Ingress Protection), TAA

XE3-4TN Wi-Fi 6 Outdoor Access Point

Network Specifications

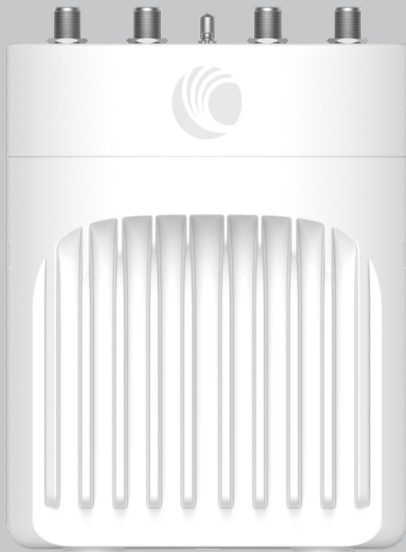
Note: Some features will be included on subsequent firmware releases.

Operational Modes	Standalone Cloud-managed cnMaestro or VM Cloud-managed XMS	RF Management	Multi-modal RF optimization supporting AutoCell (XMS) and AutoRF (cnMaestro) performed in the intelligent edge AP. Out-of-band RF spectrum analysis, radio self-test network assurance (XMS), RF monitor with chn/noise/interference
WLAN	1500 clients, 16 SSIDs WPA-TKIP, WPA2 AES, 802.1x 802.11w PMF	Network	TCP connection log, NAT logging firewall, DHCP server, L2, L3 or DNS-based access control, VLAN pooling, RADIUS attribute VID, VLAN per SSID per user
Authentication Encryption	Hotspot 2.0, 802.1x EAP-SIM/AKA, EAP-PEAP, EAP-TTLS, EAP-TLS, MAC authentication local database or RADIUS	Band Steer Load Balance	Yes
Scheduled WLAN	On/off by day, week, time of day	Tunnel	L2TP, L2oGRE, PPPoE
Guest Access	EasyPass guest self-registration, guest Ambassador, ePSK, Vouchers, Rate Limit, Splash page hosted on AP or cnMaestro Client isolation per SSID, per network	Network and RF Management Tools	Wired and wireless remote packet capture, auto-logging, ZapD performance tool, rogue AP detection
Data Limit	Client rate limit per SSID	Services	WIDs/WIPs, NTP, Syslog, SNMP traps, DNS proxy, auto-off on WAN failure, layer 2 – layer 7 application visibility and control
Subscriber QoS	WMM	API	RESTful management and statistics API Presence location APIs
Fast Roaming	802.11r, OKC, enhanced roaming		
Mesh	Multi-hop, either band		
Channel Selection	Multi-modal channel selection with AutoChannel, AutoBand (XMS), and AutoTune (cnMaestro)		

Standards

Wi-Fi Protocols	802.11a/b/g/n/ac wave 2, 802.11ax, up to 4x4. 20/40/80/160 MHz, MU-OFDMA, MU-MIMO, TWT, MIMO, VHT MCS rates, 16/64/256/1024/4096-QAM, HT20/40/80/160 MHz
	Transmit beam steering, airtime fairness, AMSDU, AMPDU, RIFS, STBC, LDPC, MIMO power save, MRC, BPSK, QPSK, CCK, DSSS, OFDM
	IEEE 802.11d/e/h/i/k/r/u/v/w

XE3-4TN Wi-Fi 6 Outdoor Access Point



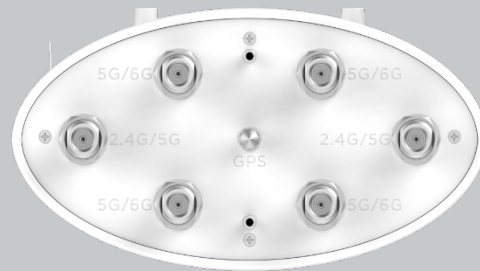
Front



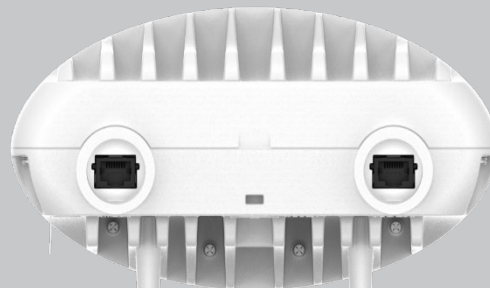
Side View



Back Panel



Top



Bottom

XE3-4TN Wi-Fi 6 Outdoor Access Point

XE3-4TN Radio Ordering Information

XE3-4T Regulatory Model

XE3-4TN0A00-US XE3-4TN Outdoor Wi-Fi 6E 4x4 SDR Access Point, 2.5 GbE, US

XE3-4TN0A00-EU XE3-4TN Outdoor Wi-Fi 6E 4x4 SDR Access Point, 2.5 GbE, EU

XE3-4TN0A00-RW XE3-4TN Outdoor Wi-Fi 6E 4x4 SDR Access Point, 2.5 GbE, 6 GHz radio disabled, RW

XE3-4TN0A06-RW XE3-4TN Outdoor Wi-Fi 6E 4x4 SDR Access Point, 2.5 GbE, 6 GHz radio enabled, RW

XE3-4TN0A00-CA XE3-4TN Outdoor Wi-Fi 6E 4x4 SDR Access Point, 2.5 GbE, CA

N000000L142A PoE injector, 60W, 5 GbE, Indoor, Energy Level 6 Supply

Antenna Ordering Information* - See XE3-4TN Antenna Ordering Guide for More Details

ANT-OM-1X1-05 Tri-Band 2.4 GHz/5 GHz/6 GHz, 5 dBi, omni-directional 1x1 antenna with N-male connector

ANT-D35-4X4-01 Dual band 5 GHz/6 GHz, 13 dBi, 35° beamwidth 4x4 antenna with N-female connectors, bracket included, cables sold separately

ANT-D60-4X4-02 Dual band 5GHz/6GHz, 11dBi, 60 degree beamwidth 4x4 antenna with N-female connectors, bracket included, cables sold separately

ANT-D30-4X4-01 2.4GHz/5GHz, 11dBi/13dBi, 30 degree, 4x4 panel antenna with N-female connectors for XH2-240

ANT-D60-4X4-01 2.4GHz/5GHz, 7.5dBi, 60 degree, 4x4 panel antenna with N-female connectors. Cables sold separately

ANT-GPS-01 GPS antenna

ANT-CB-10MM-03 Antenna cable N-type M to M, LMR400, 3m, qty 1 cable

ANT-CB-10MM-04 Antenna cable N-type M straight to N-type M Right Angle-LMR400, 3m, Qty 1 cable

*See XE3-45N [Antenna Guide](#) for more details.

Click to Download Antenna Guide

Antenna Selection Guide

XE3-4TN Wi-Fi 6 Outdoor Access Point

cnMaestro X Ordering Information

MSX-SUB-XE3-4TN-1	cnMaestro X for one XE3-4TN AP. Creates one Device Tier 3 slot. Includes Cambium Care Pro support. 1-year subscription
MSX-SUB-XE3-4TN-3	cnMaestro X for one XE3-4TN AP. Creates one Device Tier 3 slot. Includes Cambium Care Pro support. 3-year subscription
MSX-SUB-XE3-4TN-5	cnMaestro X for one XE3-4TN AP. Creates one Device Tier 3 slot. Includes Cambium Care Pro support. 5-year subscription

XMS and EasyPass Ordering Information

XMSC-SUB-2R-1	XMS-Cloud 1-year subscription: 2 or 3-radio APs with EasyPass Guest Self-Registration and Guest Ambassador modules and Cambium Care Advanced Support
XMSC-SUB-2R-3	XMS-Cloud 3-year subscription: 2 or 3-radio APs with EasyPass Guest Self-Registration and Guest Ambassador modules and Cambium Care Advanced Support
XMSC-SUB-2R-5	XMS-Cloud 5-year subscription: 2 or 3-radio APs with EasyPass Guest Self-Registration and Guest Ambassador modules and Cambium Care Advanced Support
XMSC-EDU-SUB-2R-1	XMS-Cloud 1-year subscription for Education: 2 or 3-radio APs with EasyPass Guest Self-Registration and Guest Ambassador modules and Cambium Care Advanced Support
XMSC-EDU-SUB-2R-3	XMS-Cloud 3-year subscription for Education: 2 or 3-radio APs with EasyPass Guest Self-Registration and Guest Ambassador modules and Cambium Care Advanced Support
XMSC-EDU-SUB-2R-5	XMS-Cloud 5-year subscription for Education: 2 or 3-radio APs with EasyPass Guest Self-Registration and Guest Ambassador modules and Cambium Care Advanced Support
XMSC-MSP-SUB-2R-1	XMS-Cloud 1-year subscription for MSP: 2 or 3-radio AP with EasyPass Guest Self-Registration and Guest Ambassador modules and Cambium Care Advanced Support
XMSC-MSP-SUB-2R-3	XMS-Cloud 1-year subscription for MSP: 2 or 3-radio AP with EasyPass Guest Self-Registration and Guest Ambassador modules and Cambium Care Advanced Support
XMSC-MSP-SUB-2R-5	XMS-Cloud 1-year subscription for MSP: 2 or 3-radio AP with EasyPass Guest Self-Registration and Guest Ambassador modules and Cambium Care Advanced Support
EASY-SUB-2R-1	EasyPass 1-year subscription for a 2 or 3-radio APs operating with XMS-Cloud or XMS-Enterprise
EASY-SUB-2R-3	EasyPass 3-year subscription for a 2 or 3-radio APs operating with XMS-Cloud or XMS-Enterprise
EASY-SUB-2R-5	EasyPass 5-year subscription for a 2 or 3-radio APs operating with XMS-Cloud or XMS-Enterprise

XE3-4TN Wi-Fi 6 Outdoor Access Point

Cambium Care Ordering Information

CCADV-SUP-XE3-4TN-1 Cambium Care Advanced, 1-year support for one XE3-4TN Wi-Fi 6/6E AP. 24x7 TAC support, SW updates, and NBD advance replacement for HW

CCADV-SUP-XE3-4TN-3 Cambium Care Advanced, 1-year support for one XE3-4TN Wi-Fi 6/6E AP. 24x7 TAC support, SW updates, and NBD advance replacement for HW

CCADV-SUP-XE3-4TN-5 Cambium Care Advanced, 3-year support for one XE3-4TN Wi-Fi 6/6E AP. 24x7 TAC support, SW updates, and NBD advance replacement for HW

CCPRO-SUP-XE3-4TN-1 Cambium Care Pro, 1-year support for one XE3-4TN Wi-Fi 6/6E AP. 24x7 TAC support and SW updates

CCPRO-SUP-XE3-4TN-3 Cambium Care Pro, 3-year support for one XE3-4TN Wi-Fi 6/6E AP. 24x7 TAC support and SW updates

CCPRO-SUP-XE3-4TN-5 Cambium Care Pro, 5-year support for one XE3-4TN Wi-Fi 6/6E AP. 24x7 TAC support and SW updates

CCADV-UPG-XE3-4TN-1 Cambium Care Advanced Add-on to cnMaestro X, 1-year support for one XE3-4TN. 24x7 TAC support, SW updates, and NBDS advance replacement for HW

CCADV-UPG-XE3-4TN-3 Cambium Care Advanced Add-on to cnMaestro X, 3-year support for one XE3-4TN. 24x7 TAC support, SW updates, and NBDS advance replacement for HW

CCADV-UPG-XE3-4TN-5 Cambium Care Advanced Add-on to cnMaestro X, 5-year support for one XE3-4TN. 24x7 TAC support, SW updates, and NBDS advance replacement for HW

LIMITED WARRANTY

Cambium Networks XE3-4TN Wi-Fi 6 Access Point
includes a 3-year hardware warranty.

About Cambium Networks

Cambium Networks empowers millions of people with wireless connectivity worldwide. Its wireless portfolio is used by commercial and government network operators as well as broadband service providers to connect people, places and things. With a single network architecture spanning fixed wireless and Wi-Fi, Cambium Networks enables operators to achieve maximum performance with minimal spectrum. End-to-end cloud management transforms networks into dynamic environments that evolve to meet changing needs with minimal physical human intervention. Cambium Networks empowers a growing ecosystem of partners who design and deliver gigabit wireless solutions that just work.